



The Perfect Support for Your Tank

Alfa Laval LKTC Tank Leg

Application

Stainless steel tank leg type LKTC is used for free standing stainless steel tanks or vessels where adjustable supports is necessary to ensure stability.

Standard design

LKTC consists of a cylindrical welding piece with an internal thread which takes an adjustable cylinder-shaped spindle. LKTC is designed so that it can stand either on the floor or on a stainless steel baseplate. The baseplate has a ball socket and is used where the floor is not completely horizontal to ensure stable support. The design ensures that the legs are easy to clean.



TECHNICAL DATA

Size	Max. static load (N)	Floor area of baseplate (mm ²)
¾"	75000	2600
1"	100000	5000
1½"	160000	7800

PHYSICAL DATA

Materials

Steel parts: Stainless steel AISI 304.

Finish: Base plate: Mat.

Other parts: Semi bright.

Dimensions (mm)

Size	¾"	1"	1½"
A	38	53	80
B	35.5	39.8	65.3
C	58	80	100
D	¾"	1"	1½"
E	35	40	45
F	5	5	5
Lmin.	20	20	20
Lmax.	35	50	60
R	15	15	25
T	4	6	8
Weight	0.35	0.60	1.67
(kg)	0.43*	0.83*	2.25*

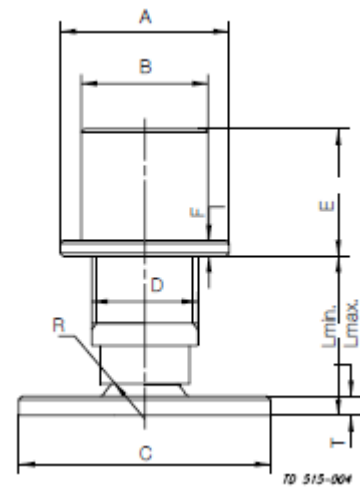
Ordering

Tanklegs without base plate

¾"	9611-71-029-0
1"	9611-71-030-0
1½"	9611-71-032-0

Tanklegs with base plate

¾"	9611-71-022-0
1"	9611-71-023-0
1½"	9611-71-025-0



Alfa Laval reserves the right to change specifications without prior notification. ALFA LAVAL is a trademark registered and owned by Alfa Laval Corporate AB.

How to contact Alfa Laval

Contact details for all countries are continually updated on our website. Please visit www.alfalaval.com to access the information direct.